

VINYL FLOORING

Modern and functional floor



EUROX UFIX 2.0

914 x 152 x 2mm



PAVIA CHERRY
EU2394G



ANZIO CHESTNUT
EU2396G



SCAFITI WLNUT
EU2399G



PRATO OAK
EU2910G



FANO OAK
EU2915G



TRENTO OAK
EU2917G

EUROX KOREA 3.0

940 x 186 x 3mm



OSAN CHERRY
KV1031



PAJU PINE
KV1041



BUSAN APPLE
KV1122



KV3077
ANSAN CHESTNUT



KV6002
MANSON TEAK



KV6010
GEOJE ASH



FRANCE MAPLE
EU3327X



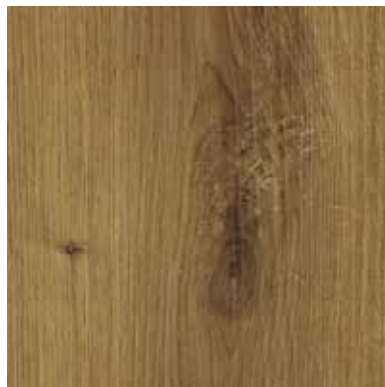
ROMANIA ALDER
EU3334X



HAZEL PLUM
EU3371X



CHAD BLACKWOOD
EU3375X

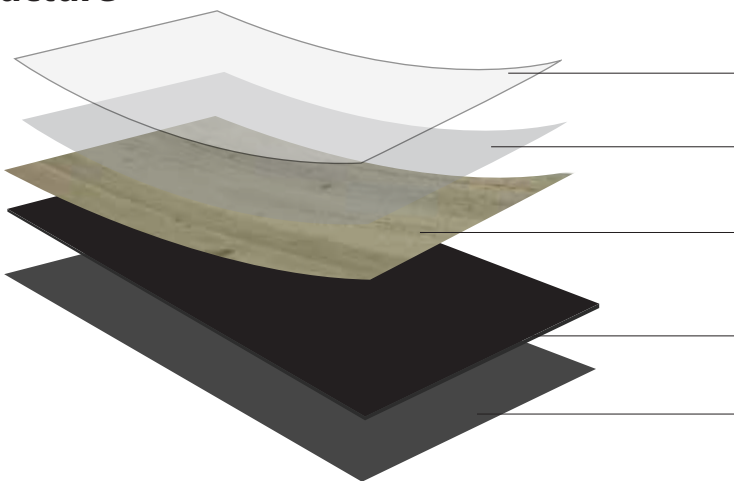


THAI TEAK
EU3384X



BALI TEAK
EU3386X

Structure



UV Layer

Reduce fading to sun light near window or any other indoor environment.

Wear Layer

Strong wear-resistance for foot traffic and make the surface scratch resistance.

Decorative Paper

A design layer of high-resolution photo of real wood that is reproduced with sophisticated printing techniques.

Base Layer

Primary layer of the PVC structure.

Balance Layer

Supports the overall balance of the panel structure.

Specifications

Series | Board Size | Package Content | Surface Treatment | Edge Treatment | Joining Mechanism | Area Condition | Area Size | Suitability

EUROX UFIX 2.0 (Self-Adhesive)							
914 x 152 x 2mm	1 carton = 36.00 sq.ft / 24 pieces	Embossed	Seamless	Self-Adhesive	Suitable for wet area	Small to large area	Residential to moderate commercial

EUROX KOREA 3.0 (Dry Back)							
940 x 186 x 3mm	1 carton = 36.00 sq.ft / 19 pieces	Natural Crystal	Seamless	Dry back	Suitable for wet area	Small to large area	Residential to moderate commercial

EUROX XTRA 3.0 (Dry Back)							
1219 x 229 x 3mm	1 carton = 42.00 sq.ft / 14 pieces	Embossed	Seamless	Dry back	Suitable for wet area	Small to large area	Commercial Grade

Why choose Vinyl Flooring ?

Vinyl flooring is a type of synthetic floor that is primarily made from plastic or PVC manufactured in shapes of squares and long plank. In standard vinyl flooring, the base layer is usually coated with PVC vinyl and a plasticizer. With wear layers are applied made this flooring impervious to water. It is also known for its long-wearing durability and made with aesthetic details resembles wide variety natural wood looks matching your décor; a versatile yet affordable choice for flooring on a budget.

Vinyl Flooring have taken over homes, following decades of justified popularity residential and moderate commercial areas requiring safe, resistant materials that are easy to clean, such as schools, retails, sports centers, and et cetera. This safe, resistant material flooring is perfect and functional performance with below advantages;



Termite proof



Waterproof



Easy to clean



Anti-Slip



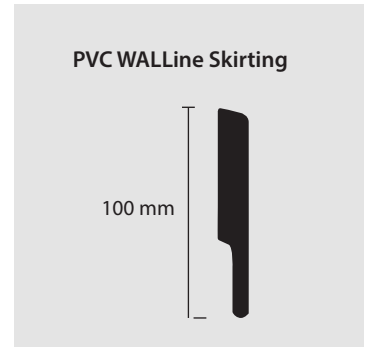
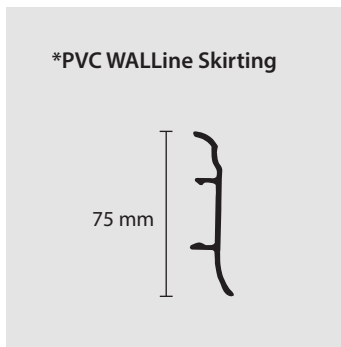
Stain Resistant



Easy to Install

Skirting & Cap

FLOOR DEPOT offers a wide range of optically matching WALLine skirting for a harmonious look for any wood surface enable the possibility of conscious accentuation.



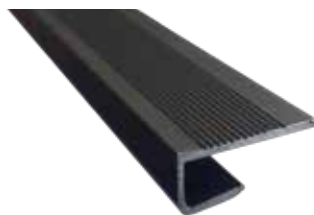
Profile

Combine aluminium profiles from FLOOR DEPOT, create finishes for a floor aesthetic that is perfect in every



Adaptation Profile

used to transition from a vinyl floor to a floor that is lower than wood floor installed.



End Profile

used to transition from a vinyl floor to another type of flooring or floor that is higher than the wood installed.



Transition Profile

used to transition from a vinyl floor to another that both floors are the same height.



Stairnose Profile

used whenever there is a step down or staircase that will be receiving vinyl floor.

Due to printing consideration, the actual color floorboard may vary slightly from those shown. All pictures are for illustration purpose only. Specification are subject to change without notice for further improvement.